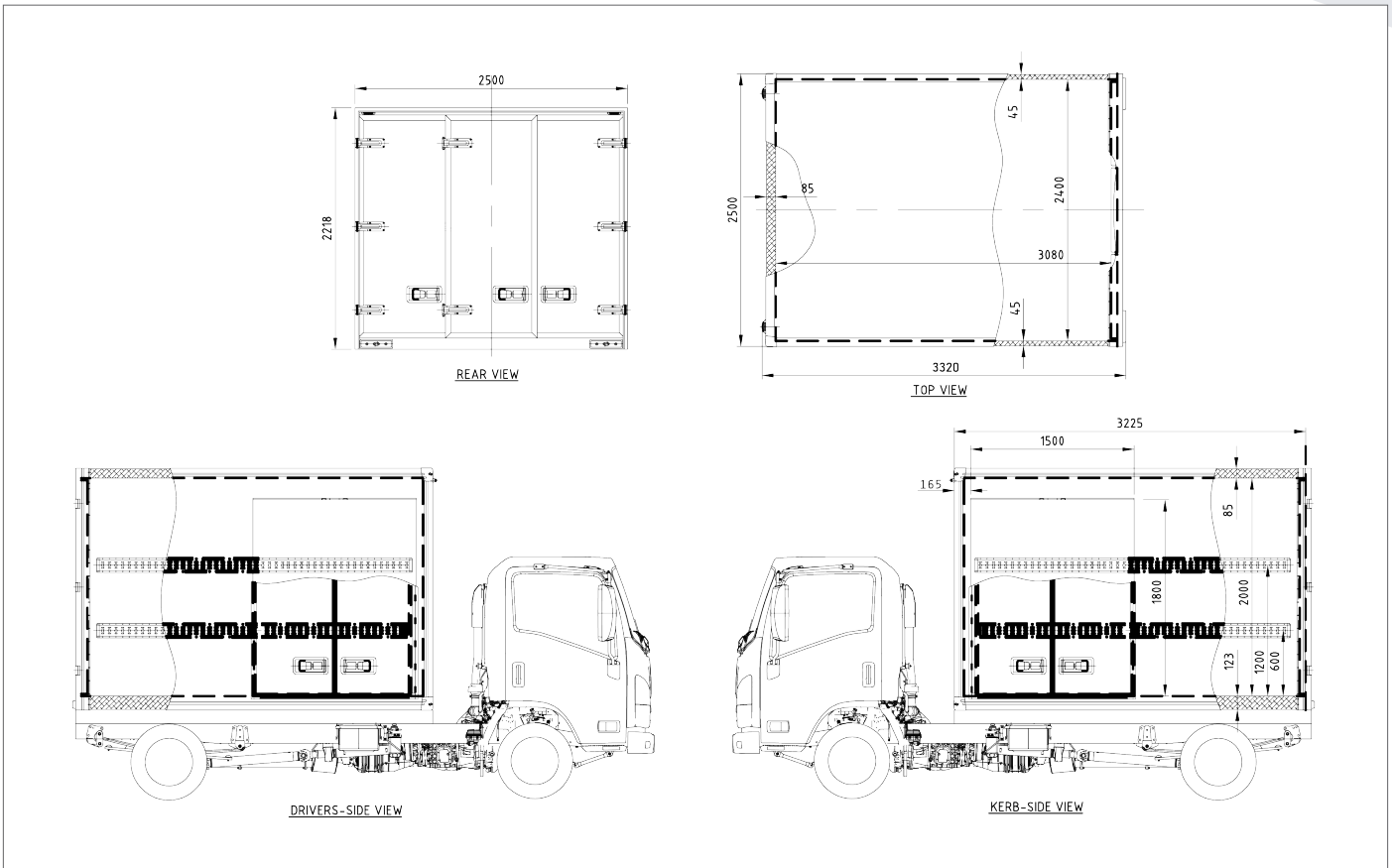


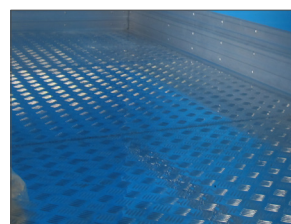
# TMB3200W SERIES



Our Fibreglass bodies are engineered and designed to provide superior insulation and durability, manufactured with quality fibreglass and insulation materials across our entire range of freezer spec bodies.

## FEATURES & BENEFITS

- » State of the Art Panel Technology FRP/PUR/FRP
- » Fully welded aluminium checker plate flooring and internal kick plates all round (to avoid damaging the floor)
- » Double Side Doors on Both Sides
- » Internal recessed lights and recessed switch
- » Stainless steel recessed door hardware and aluminium extrusions (less extrusions when adding decals for advertising)
- » Interior LED Cargo light and rear running lights and exterior reflectors
- » EPDM Rubber Seal
- » 24 Months Structural and Hardware Warranty
- » Truck Body Weight: Approx. 1145Kg (Fitted body without fridge)



Aluminium checker plate flooring



Internal recessed lights

